

NETZSCH

Proven Excellence.■

Pumps & Systems

NETZSCH

Proven Excellence.

Welding and Fabrication RFQ package

Localizing welding and fabrication capabilities
Thorsten Thiebach

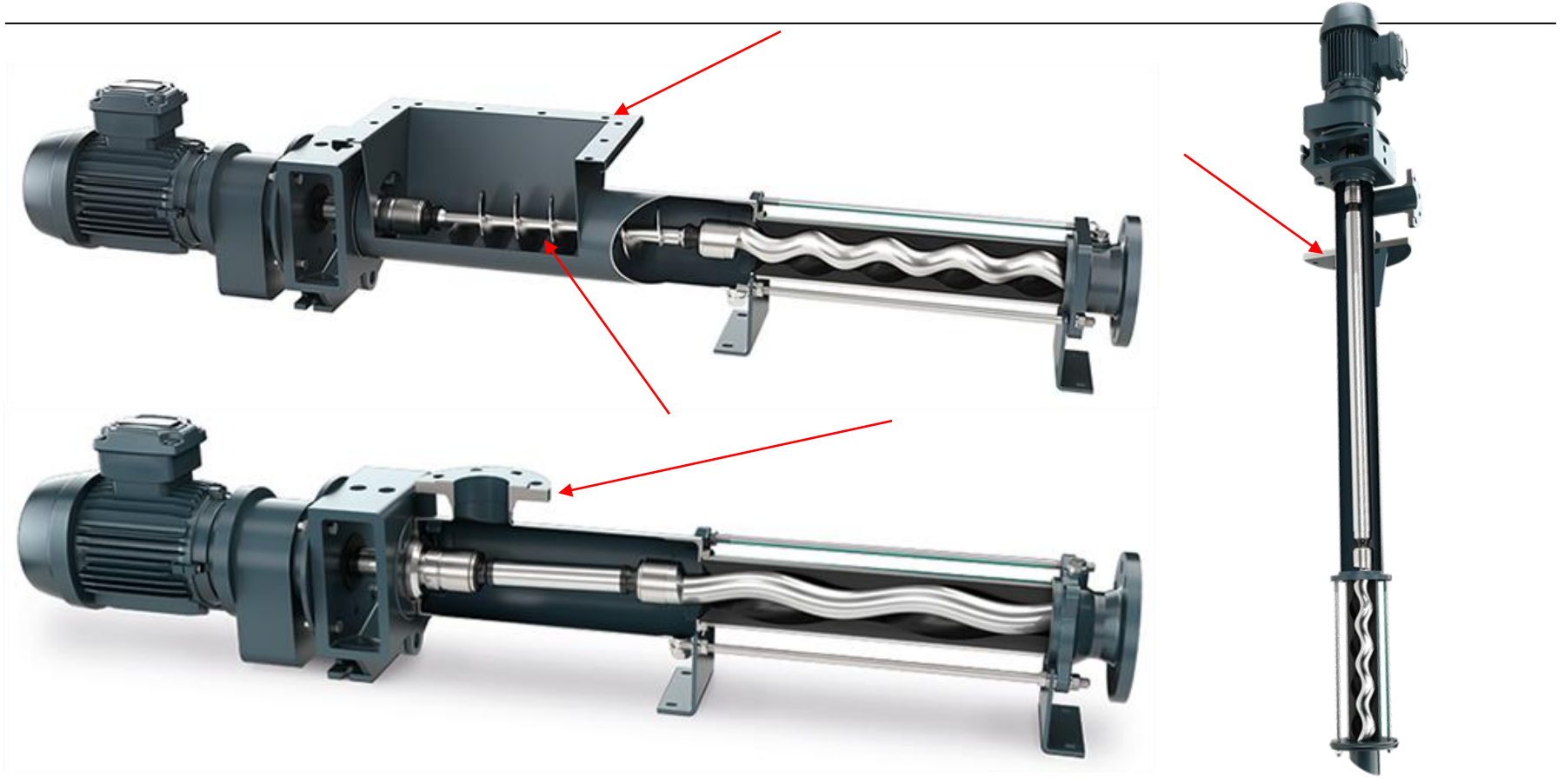
-
- Localization of sheet metal welding and machining
 - Building up a domestic and strategic partner that can fulfill the requirements at a competitive level compared to our current footprint

Attached are photos, descriptions and drawings of typical components. These are examples of a certain size and execution.

- Size of your company (revenue, locations, etc)?
- Number of employees?
- In business since?
- What welding certificates and procedures do you have in place?
- Are you welders certified?
- Please provide photos of similar products you have manufactured in the past.
- Please list your machinery relevant to manufacture the requested components.
- Are you ISO9001 certified?
- Do you have your own delivery trucks?

Product pictures with components highlight in this RFQ package

NETZSCH





Full view



Welded flights

Coupling rod machined



Range:

- Up to 1100mm/43" long
- Mainly between 400-700mm/15"-27" long

Basic material:

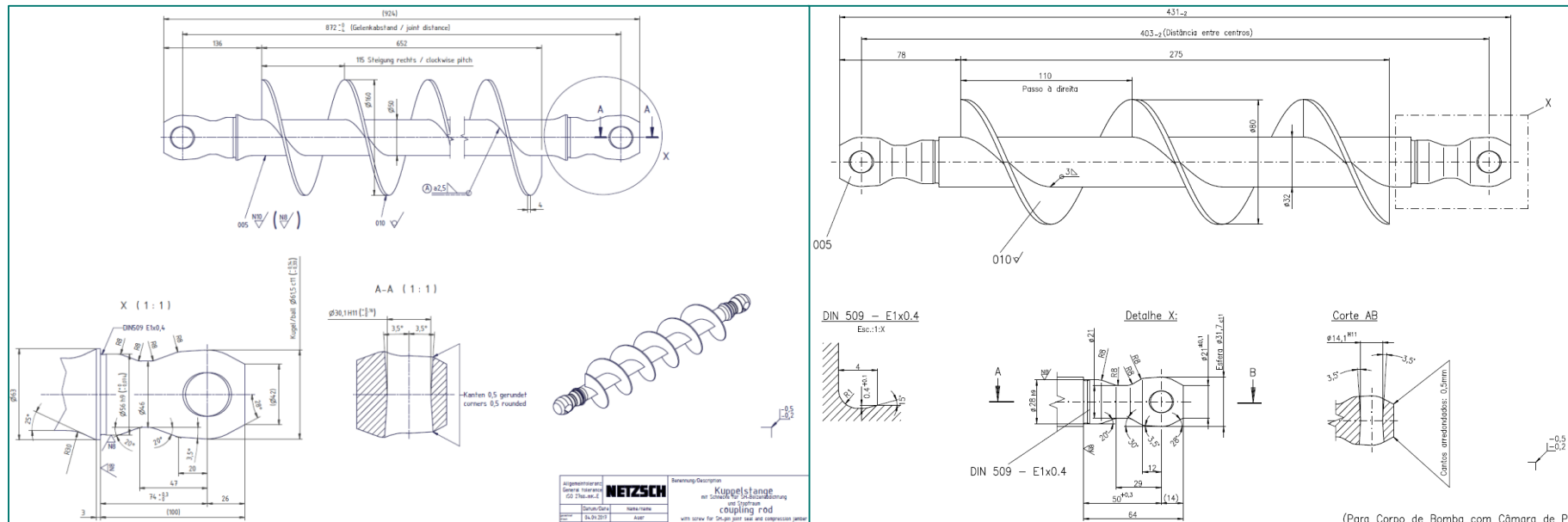
- AISI316
- AISI1020

Comments:

- Diameter and pitch of flights varies
- Painting for 1020 optional

Estimated quantity p.a.:

- 50-100 pcs





Full view



Machining
top: stator side
bottom: lantern side



Welding inside

Range:

- length 400mm-1000mm/15"-40"
- Diameter 130mm-300mm/5"-12"

Basic Materials:

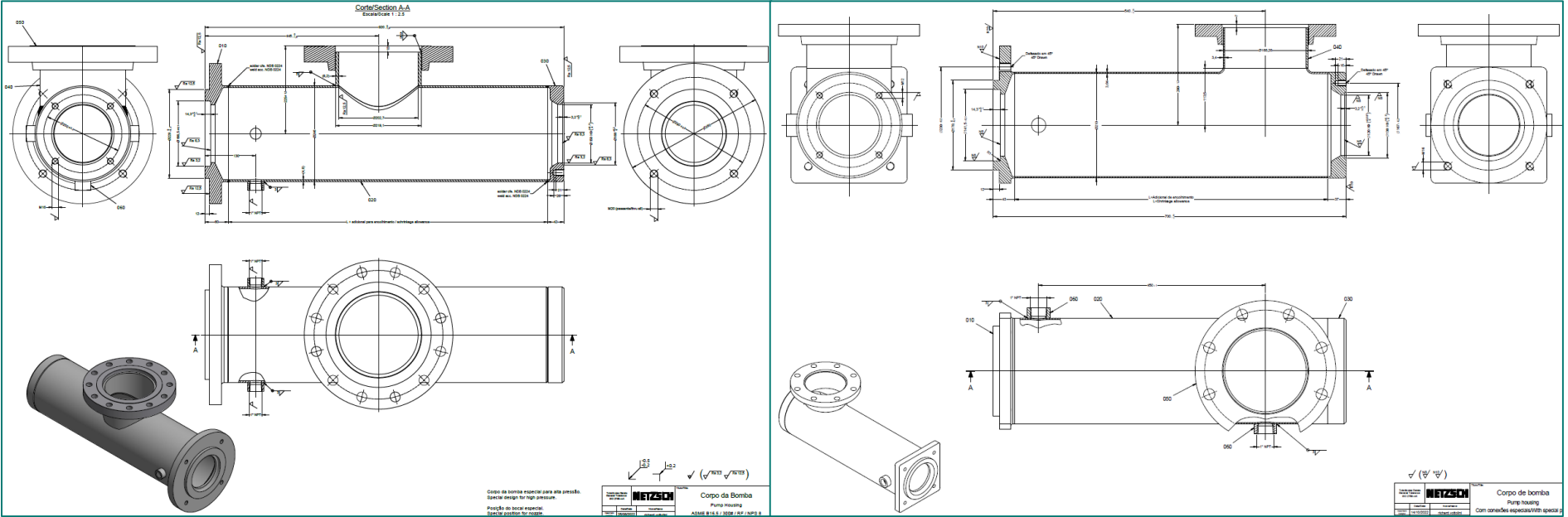
- AISI316
- AISI304
- AISI1020

Comments:

- Consists off standard flange with welded neck, stator adapter flange, lantern flange and formed sheet metal or round tube.
- Wall thickness of housing can vary between 3mm-6mm/0.125"-0.25"

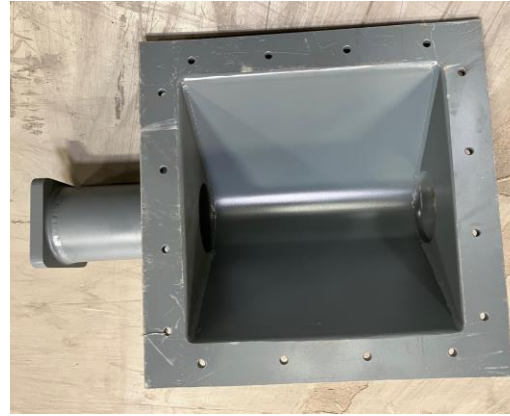
Estimated quantity p.a.:

- 200-400pcs





Full view



Welding inside



Machining
lantern side



Machining
stator side

Range:

- Housing length up to approx. 1100mm/43"
- Hopper opening can vary based on customer requirements, approx. up to 450mm wide

Basic Materials:

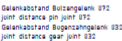
- AISI316
- AISI1020

Comments:

- Design of bolt connection can be changed to welded flat bar instead of folding
- Design: flange + sheet metal welded to pipe + hopper welded + flange

Estimated quantity p.a.:

- 50-100pcs





Full view



Welding below
mounting plate



Welding above
mounting plate



Machining requirements
toward lantern

Range:

- Mounting plate approx. 250-500mm/9"-20"
- Housing length approx. 500-2000mm/20"-78"

Basic Materials:

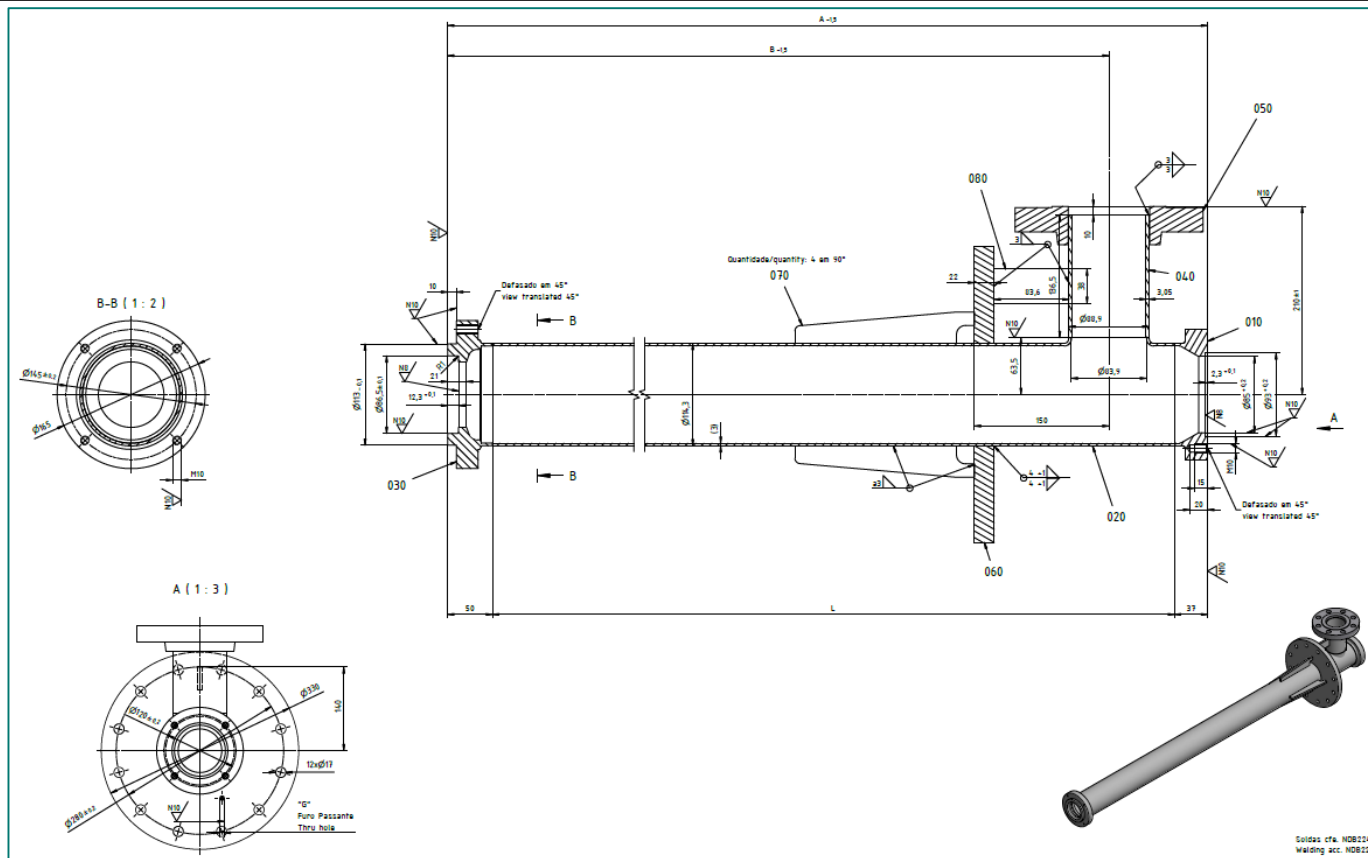
- AISI1020

Comments:

- Custom design, mounting plate and immersion depth vary based on customer requirements

Estimated quantity p.a.:

- 10-20pcs





NETZSCH

Proven Excellence.

You can rely on NETZSCH.