

**** COMPLETE THIS FORM TO INITIATE SUPPLIER SCOUTING ****

MEPNN Supplier Scouting Opportunity Synopsis

(To view in larger text, press Ctrl + Simultaneously)

The submitting entity agrees to notify NIST MEP of the status of actions taken as a result of this scouting instance within 30 days after receiving a results report. I agree

Number of days to be posted if other than 30 120

Item to be Scouted Extruded Copper for Box Connector

Please describe the item application/the end use of the item Copper extrusions of specified cross section to be machined into box connectors for electrical switches

Supplier Customer/Product NAICS Code, if known

TECHNICAL INFORMATION

1. Supplier Information

1a. Type of supplier being sought Other

If other, please specify type of supplier all of the above

1b. Reason for scouting submission Other

If other, please specify reason 2nd Supplier, Re-shore
Asia supplier not reliable, long lead time, heavy air freight cost

2. Summary of Technical Specifications and Performance Requirements

2a. Describe the manufacturing process Copper Extrusion: Rectangular Hollow (Symmetrical)

2b. Provide dimensions, size, tolerances, and performance specifications for the item Outside Rectangle .737 x .466/.455 with .015+/-0.010 corner radii. Symmetrical Inside rectangle .462/.432 x .326/.323 with inside corner radii .010 +/-0.005. The extrusion overall length is 10 foot. Note: Wall dimensions .149/.145 (2 times) and .070/.066 (2 times)

2c. List required materials needed to make the product, including materials of product components Material: 120 Copper Alloy, 1/4 Hard. Hardness Rockwell B20-B54

Note: Company may consider 110 Copper Alloy 1/2 hard or 3/4 hard

2d. Are there applicable certification requirements? Yes

If yes, please explain applicable certification requirements Material Certifications required(Physical and Chemical)

2e. Are there applicable regulations? Yes

If yes, please explain applicable regulations Material Certification is important for our UL requirements

2f. Are there any other standards, requirements, etc.? No

If yes, please explain other standards, requirements, etc.

2g. Additional Comments The extrusion straightness is important to our manufacturing process since we bar feed in a CNC Turning center.

Bow or twist is not acceptable

BUSINESS INFORMATION

3. Volume and Pricing

3a. Estimated potential business volume (i.e. # Units per day/month/year)

20000 and up to 40000 feet per year (2000 extrusions 10 foot long and up to 4000 extrusions 10 foot long per year). or Monthly shipments 2000 feet/ month and up to 4000 feet / month

3b. Estimated target price/unit cost information (flexible and negotiable not accepted)

\$110.00 per 10 foot extrusion. This is our current price

4. Delivery Requirements

4a. When is it needed by? (immediate, 30 days, 6 months, etc.)

6 months

4b. Describe packaging requirements (i.e. individually/group packaging)

Group Packing, 250 extrusions per wooden Box on a Skid

4c. Where will this item be shipped?

Bristol, PA

5. Additional Comments

5a. Is there other information you would like to include?

6. Requesting Scout

6a. Scout Name

Teri Grumbrecht

6b. Center Name

DVIRC

If an organization other than a Center, please enter

6c. Scout Email

tgrumbrecht@dvirc.org

Supplier Scouting Number (NIST MEP use only)

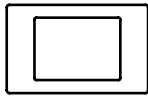
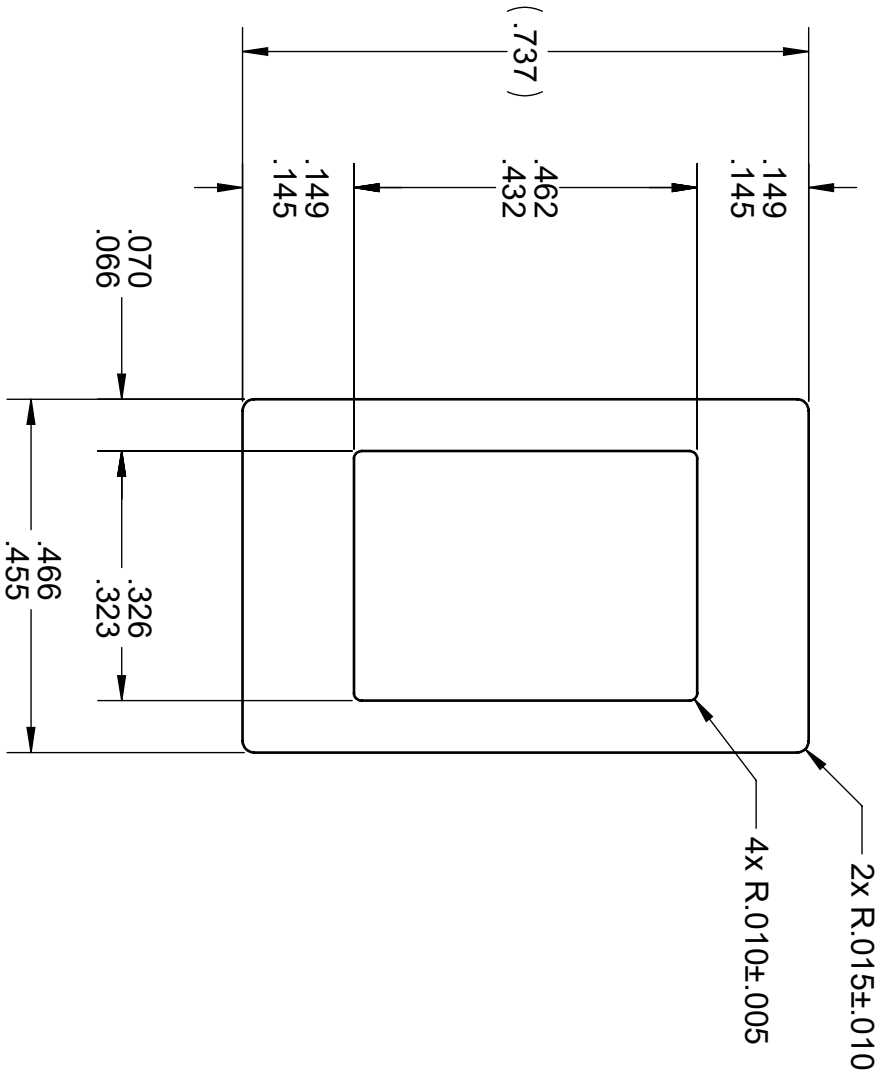
2023-016

Attachments

700-0112 revA Extrusion, Box Connector.PDF



REV	ECN	DESCRIPTION	DATE	APPR.
A		Release for Production	5/9/2022	SFS



Full Scale

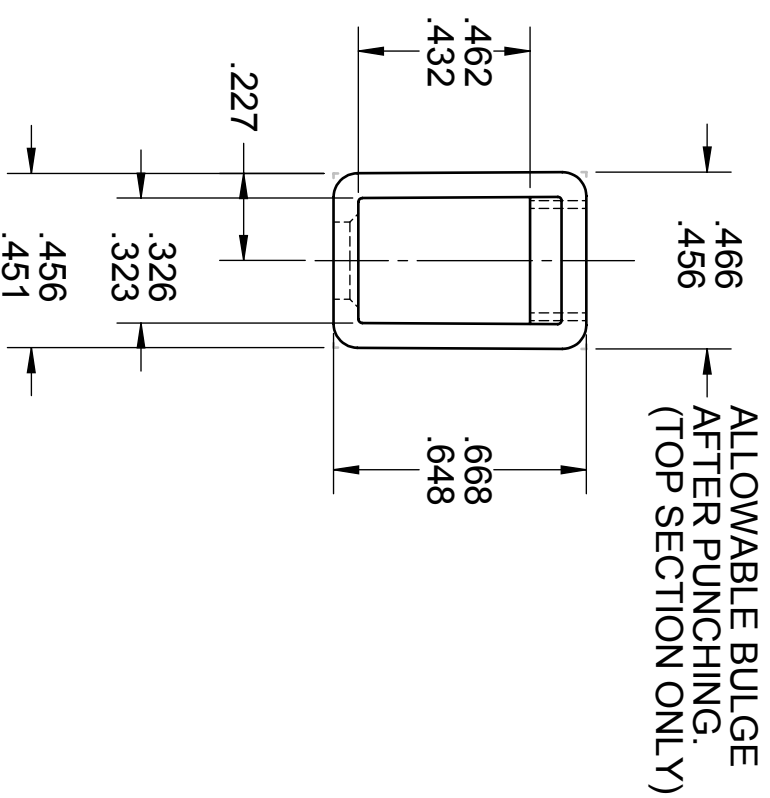
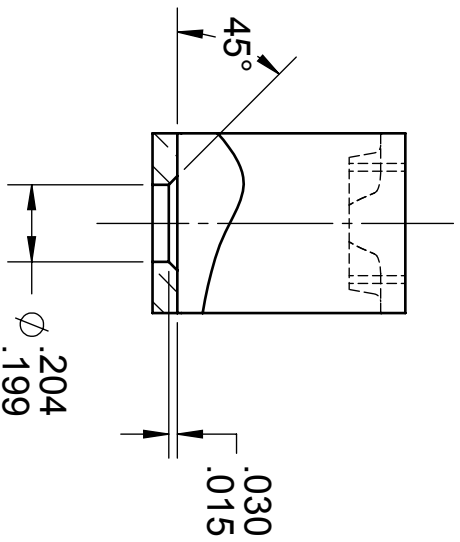
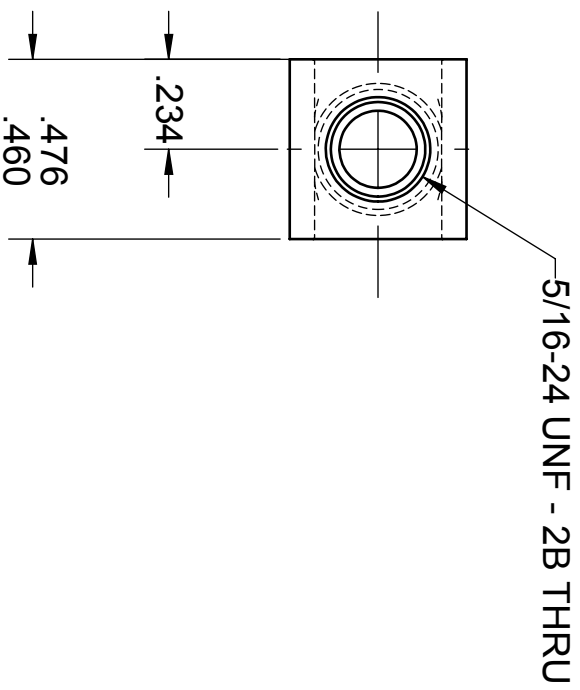
NOTES:

1. MATERIAL: 120 Copper Alloy, 1/4 Hard. Hardness Rockwell B20-B54
2. Approx Weight .75 pounds per foot
3. Purchased In 120 inch lengths, ±0.5 inch
4. Material Certs are required with each delivery.
5. FINISH: None

FOR INTERNAL USE ONLY		GEOMETRIC TOLERANCE UNLESS OTHERWISE SPECIFIED		DIMENSION TOLERANCE (UNLESS OTHERWISE SPECIFIED)		JOB #: DRAWN: SFS DATE: 8012		TITLE: Extrusion, Box Connector	
MANUFACTURE QTY		FORM	MACHINED	OTHER	FRACTION	± 1/32	CHECKED: -	DATE: 4/6/2022	SEE NOTES FOR MATERIAL AND FINISH
JOB # IF DIFFERENT FROM TITLE BLOCK		1/12 SUM OF DIAMETRAL TOL.S., TIR			0.000	± 0.015	USED ON DWG NO: -	-	DWG. NO.: 700-0112
		SURFACE FINISH UNLESS SPECIFIED:			0.000	± 0.005			SCALE: 4:1
		1/2 FOR FRACTIONAL DIM			0.0000	± 0.0005			SHEET: 1 OF 1
		1/32 FOR 0.000 DIM							REV: A
		1/8" FOR 0.000 DIM							

REV	DESCRIPTION	DATE	APPR.
C	Redraw in Solidworks; Add Chart with Unplated and Nickel plated options; Material was Copper Code No. B.O.S.	5/11/2012	SFS

PART NO	DESCRIPTION	FINISH
11388-01	BOX CONNECTOR, TIN PLATED	BRIGHT TIN PLATE .0001/.0002 THK
11388-01U	BOX CONNECTOR, UN-PLATED	NONE
11388-01N	BOX CONNECTOR, NICKLE PLATED	NICKLE PLATE .0001/.0002 THK



- NOTES:
1. SURFACE FINISH TO BE OTHERWISE SPECIFIED. 63 ✓ UNLESS
 2. BREAK ALL CORNERS AND SHARP EDGES UNLESS OTHERWISE SPECIFIED.
 3. MATERIAL: 120 COPPER, 1/4 HARD. HARDNESS: ROCKWELL B20-B54
 4. FINISH: SEE CHART
 5. REFERENCE: ILSCO D8391

GEOMETRIC TOLERANCE UNLESS OTHERWISE SPECIFIED		DIMENSION TOLERANCE (UNLESS OTHERWISE SPECIFIED)		CAD GENERATED DRAWING: DO NOT MANUALLY UPDATE THE INFORMATION ON THIS DRAWING IS CONFIDENTIAL. UNAUTHORIZED USE IS PROHIBITED.	
FORM	MACHINED	FRACTION	± 1/32	CUSTOMER:	801251
□	.001"/1"	0.00	± 0.015	DRAWN:	SFS
∠	.002"/1"	0.00	± 0.005	CHECKED:	-
⊥	1/16"/FT. TIR	0.000	± 0.0005	USED ON DWG NO:	-
⊙	1/8"/FT. TIR			DATE:	5/11/2012
	1/2 SUM OF DIAMETRAL TOLS., TIR				
	SURFACE FINISH UNLESS SPECIFIED:				
	29) FOR FRACTURAL DIM				
	12) FOR 0.00 DIM				
	8) FOR 0.000 DIM				

TITLE: **BOX CONNECTOR, METER TEST SWITCH**

SEE NOTES FOR MATERIAL AND FINISH

SIZE: B SCALE: 2:1 DWG. NO.: 11388-01 SHEET: 1 OF 1 REV: C





