

## ITEM OPPORTUNITY SYNOPSIS:

Item to be Scouted

Supplier Scouting Number

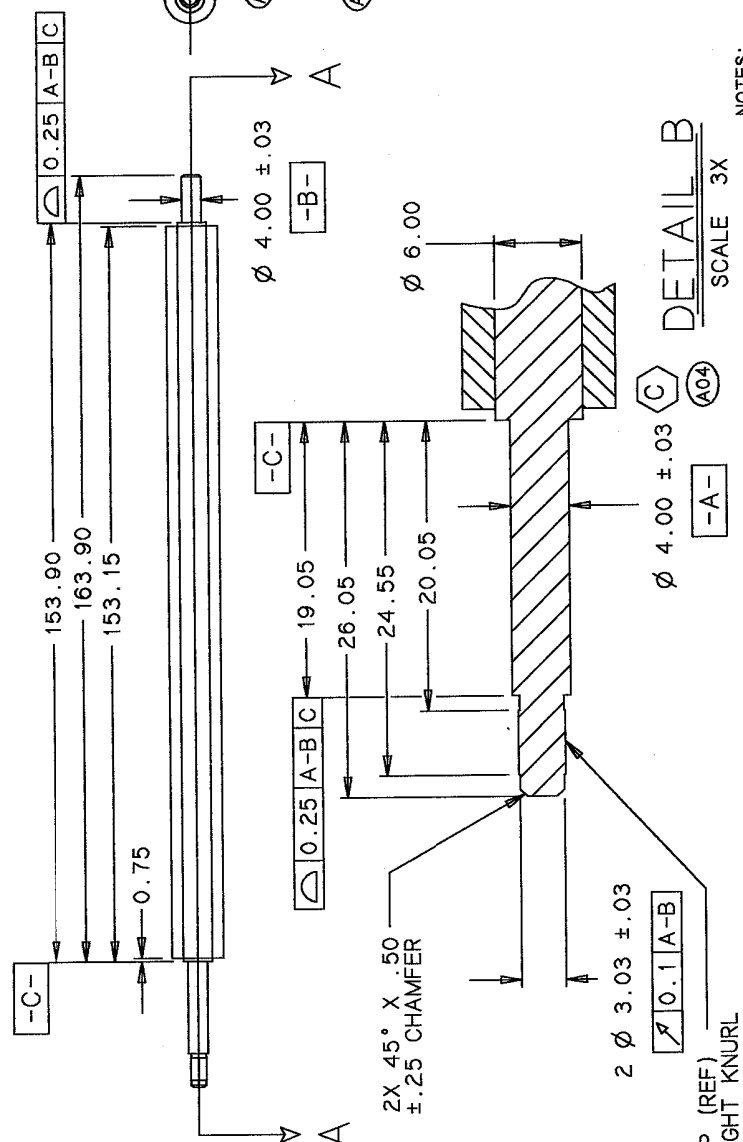
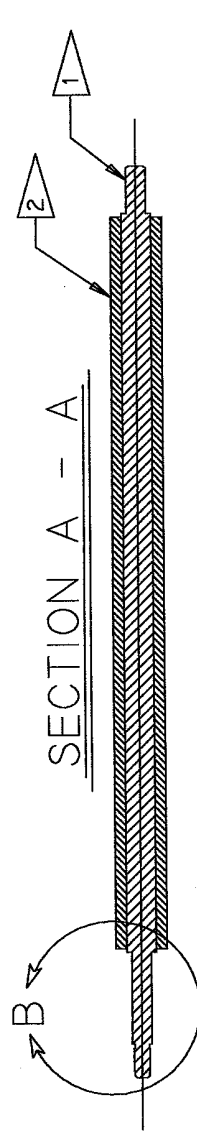
NAICS Code, if known

<b>TECHNICAL INFORMATION:</b>	<b>1. Describe the Item:</b>	Please describe the item application/ the end use of item.
	Provide the item number <u>if applicable</u> : (N95 Mask vs Protective Mask).	
	<b>2. Summary of Technical Specifications and Performance Requirements:</b>	<b>a. Provide dimensions / size / tolerances / performance specifications for the item.</b>
		<b>b. List required materials needed to make the product, Including materials of product components, if applicable.</b>
		<b>c. Are there applicable certification requirements to supply this item? (i.e. ISO certification) Are there any applicable regulations that apply to the production of this item? (i.e. FDA regulations or EPA regulations) Are there any other standard requirements? (i.e. ASME Standard, IEEE Standard) Please specify.</b>
<b>d. Describe the manufacturing processes (elaborate to provide as much detail as possible).</b>		
<b>f. Additional Comments:</b>		
Is there other information that would impact the item's performance or usefulness? Please explain.		

<b>BUSINESS INFORMATION:</b>	<b>Potential Business Volume Estimate (i.e., # Units Per Day, Month, Year):</b>		
	<b>Target Price / Unit Cost Information:</b>		
<b>Delivery Requirements:</b>	<b>When is it needed by? (Immediate, 30 Days, 6 months, etc.)</b>		
	<b>Describe packaging requirements (i.e., individually/ group packaging).</b>		
	<b>Where is this opportunity located? Is there a preferred shipping proximity - if applicable?</b>		
<b>Additional Comments:</b>	<b>How long would you like to leave this opportunity open to the National Network?</b>		
	<input type="checkbox"/> 10 days	<input type="checkbox"/> 15 days	<input type="checkbox"/> 20 days      _____ Other
	<b>Is there other information you would like to include?</b>		

Photos or diagrams of the item (helpful but not required).

REVISIONS			
REV	ECN NUMBER	DATE	DRW
01	CHANGE TO TOT. RUNOUT FORM PROF	11/22/94	R.L.D.
A02	MATCH REV'S	01/17/95	EW
A03	9001001A RELEASED	02/28/95	EW
A04	9001355A ADD CRIT. DIM'S	7-7-95	LM
A05	3035268A ADD ROHS NOTE	9-22-06	JWS

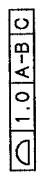


CRITICAL DIMENSIONS TO BE MONITORED BY INCOMING INSPECTION AND PERIODICALLY BY VENDOR.

IN-PROCESS DIMENSIONS TO BE MONITORED BY SUPPLIER ACCORDING TO A PRE-APPROVED PLAN.

TEETH MUST BE CLEAN AND FREE OF FLASH. SPACES BETWEEN RAISED PORTIONS OF TEETH MUST NOT BE BLOCKED AT THE ENDS. TOOTH TIPS SHARP TO 0.08R OR 0.16 WIDE MAX.

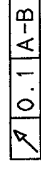
3. ALL DIMENSIONS ARE BASIC UNLESS OTHERWISE SPECIFIED. THE FOLLOWING PROFILE APPLIES TO ALL DIMENSIONS UNLESS OTHERWISE SPECIFIED:



2. EPDM 45 ± 5 DURO, BLACK.

1. STEEL, COLD DRAWN C12L14 ELECTROLESS NICKEL PLATE C.005-0.008MM THICK, MUST MEET ROHS REQUIREMENTS PER DOCUMENT 220327.

160 DP (REF) STRAIGHT KNURL BEFORE KNURLING. Ø 3.21 ± .05 AFTER KNURLING. 19 COMPLETE TEETH.



4

NOTES:

DO NOT SCALE DRAWING

UNLESS OTHERWISE SPECIFIED, ALL DIMENSIONS ARE IN MILLIMETERS

UNLESS OTHERWISE SPECIFIED

PERTECH PROPRIETARY

NOTICE: THIS DRAWING AND/OR TECHNICAL INFORMATION IS PROPRIETARY TO PERTECH. IT IS ISSUED IN CONFIDENCE FOR ENGINEERING INFORMATION ONLY. MAY NOT BE REPRODUCED OR USED TO MANUFACTURE ANYTHING WITHOUT WRITTEN PERMISSION FROM PERTECH, AND IS LOANED FOR MUTUAL ASSISTANCE TO BE RETURNED WHEN ITS PURPOSE HAS BEEN SERVED.

MATERIAL:



2



DRAWN FOR DISCHECKED

NEXT ASSY:

PERTECH 1860 COLLEGE VIEW DR RIVERTON, WYOMING 82501  
TITLE ROLLER-DRIVE, FEEDER

SIZE DWG. NO. 106701A  
SCALE 1X OF 1

REV 05